



Wavendon Avenue, London, W4  
Guide Price £4,250,000

**WHITMAN & CO.**

SALES · LETTINGS · COMMERCIAL



Extensively re-constructed, this unique home is a true one-off. Offering sumptuous living and entertaining space behind a traditional facade, ideally located in this prestigious residential street, offering close proximity to numerous amenities.

The property comprises a luxury master suite, four/five further bedrooms, reception room, 33' bespoke kitchen/breakfast room, utility room, cinema room, private south-facing landscaped garden with side access. With underfloor heating throughout, air conditioning, and extensive insulation, the property benefits from a 'B'-rated EPC.

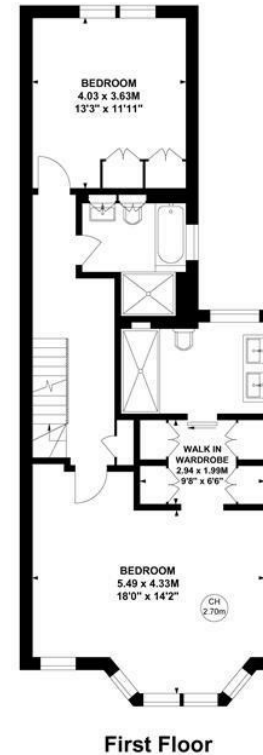
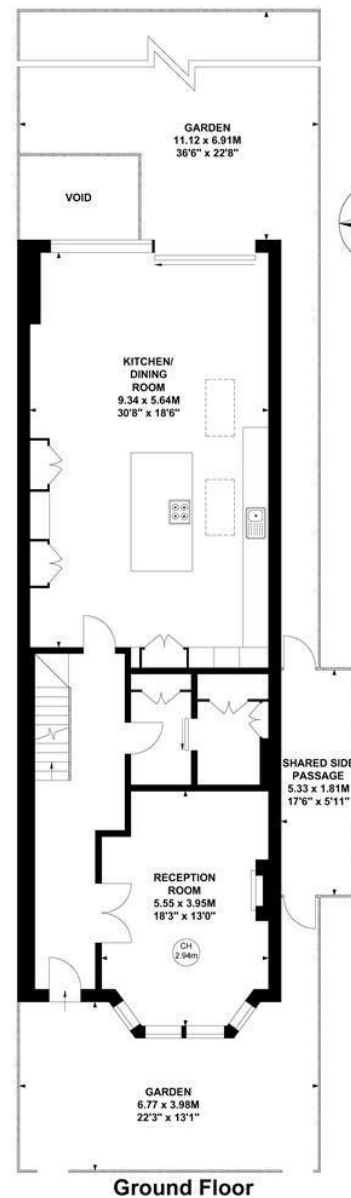
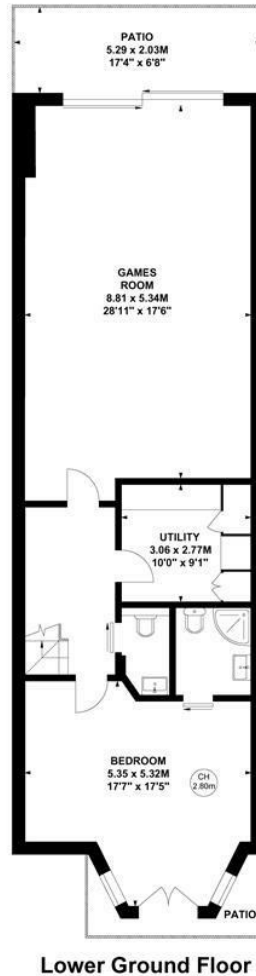
Situated within a few minutes' walk of Chiswick High Road with its exclusive range of shops, bars and restaurants. Transport links include Turnham Green Tube Station, local bus routes and the A4/M4 into and out of London. Offered for sale with no onward chain.



# Wavendon Avenue, W4

Approximate Gross Internal Area  
335.38 sq m / 3610 sq ft  
(Including Eaves Storage)  
Eaves Storage  
3.02 sq m / 32 sq ft

Key :  
CH - Ceiling Height



Not to scale, for guidance only and must not be relied upon as a statement of fact.  
All measurements and areas are approximate only

- Luxury master suite
- Four further bathrooms
- Private south-facing landscaped garden

- Four/five further double bedrooms
- 33' Bespoke kitchen/breakfast room
- No onward chain

Tenure - Freehold  
Local Authority - Hounslow  
Council Tax - TBA

